

**Jane Hughes, M.D.**  
**Joseph C. Paviglianiti, M.D.**  
**Eric A. Pennock, M.D.**  
Michelle L. Werteleit, O.D., F.A.A.O.

**Administrative Office:**  
124 Graham Park Drive  
Suite 300  
Cranberry Twp, PA 16066

**Phone: 724-772-3388**  
**Fax: 724-772-7021**

**Office Hours:**  
8:00am-4:30pm  
Appts Available 7:30am-7:00pm  
Saturday Appts. Available

**North Clinical Office:**  
124 Graham Park Drive  
Suite 300  
Cranberry Twp, PA 16066

**East Clinical Office:**  
Old William Penn Prof. Bldg.  
Suite 2  
4750 Old William Penn  
Highway  
Murrysville, PA 15668

**South Clinical Office:**  
Meadows Prof. Center  
1385 Washington Rd. (Rt. 19)  
Washington, PA 15301

**Insurances Accepted:**  
Medicare  
Highmark BS, Security Blue  
UPMC, UPMC For You, UPMC For Life  
Aetna  
United Healthcare  
Cigna  
HealthAmerica/Assurance, Advantra  
PA MA, Ohio MA, WVMA  
Gateway  
Unison of PA  
Davis Vision, VSP, NVA, VBA Opticare  
(If your insurance carrier is not  
listed, please call the office for  
further assistance.)

*Free parking is available at  
all our Offices.*



Scan this code to visit our  
mobile website



**Pediatric  
Ophthalmology  
& Adult Strabismus**  
Pittsburgh, Pennsylvania

**(724) 772-3388**

[www.eyemdsforkids.com](http://www.eyemdsforkids.com)

### Welcome to Our Office

Our doctors specialize in the diagnosis and treatment of pediatric eye disorders and adult strabismus. An initial eye evaluation takes approximately 1-1 1/2 hours, and will usually include the placement of dilating eye drops. Please budget enough time for your visit. We accept a wide range of insurance policies (see list below), and please bring all medical insurance cards with you. If your plan requires a referral be sure to bring it with you. If it is being faxed, call to confirm that our office has received the necessary documents. We look forward to meeting you.

Patient's Name: \_\_\_\_\_

Appointment Date/Time: \_\_\_\_\_

Office Location: (Circle One)

North East South

Referring Physician Name/Phone Number: \_\_\_\_\_

### Directions to Offices: (See Maps on Back)

#### North Office:

From Pittsburgh: 279N to 79N, take Exit 78 (Mars/Cranberry Twp) take left onto 228W, take right onto 19N. From the old office you will stay on 19 North for a quarter mile. At the light on Rochester Road, make a left and drive 1 mile to Graham Park Drive. Make a right into the parking lot. We have parking in the front and back of the building.

From North of Cranberry: Follow 79S to Exit 78 (Rt. 228), make right at exit ramp and follow Rt. 228 to Rt. 19N and follow directions above.

From PA Turnpike:

Take Exit 28 (old exit 3) (Cranberry Twp/Rt. 19), go north on Rt. 19 and follow above directions.

#### East Office:

From Pittsburgh: Take 376 East to Rt. 22 East toward Murrysville. Go approximately 5 1/2 miles on Rt 22 East; at the intersection of Cline Hollow Rd. and Rt.22 make a left; at the first stop sign make a left onto Old William Penn Highway. Make a right into parking lot just before the stop sign/flashing red light. (About 1/4 mile)

From PA Turnpike: Take Monroeville Exit; get on Rt.22 East towards Murrysville and follow above directions.

#### South Office:

From Pittsburgh: Fort Pitt Bridge to 279S to 79S, take Exit 41, (Race Track Rd - Meadowlands). Make a left onto Race Track Rd. Office is located at the end of Race Track Road before the traffic light on the right. (1.3 miles off I-79)

From Wheeling: 70E to 79N, take the Exit 41 (Race Track Road - Old Exit 8). Turn right off of the exit. (1.3 miles off I-79)

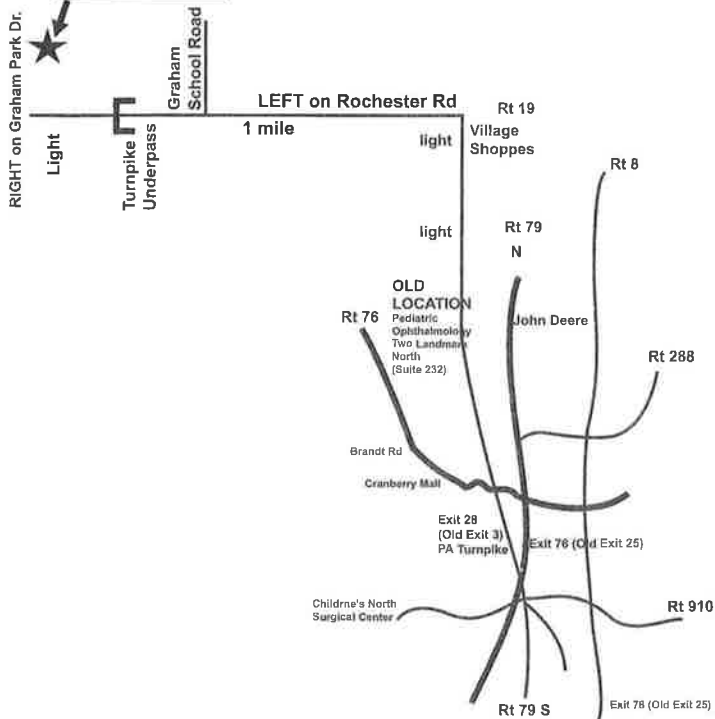
Our office is on the right, immediately before the intersection with Route 19.

Pediatric Ophthalmology and Strabismus

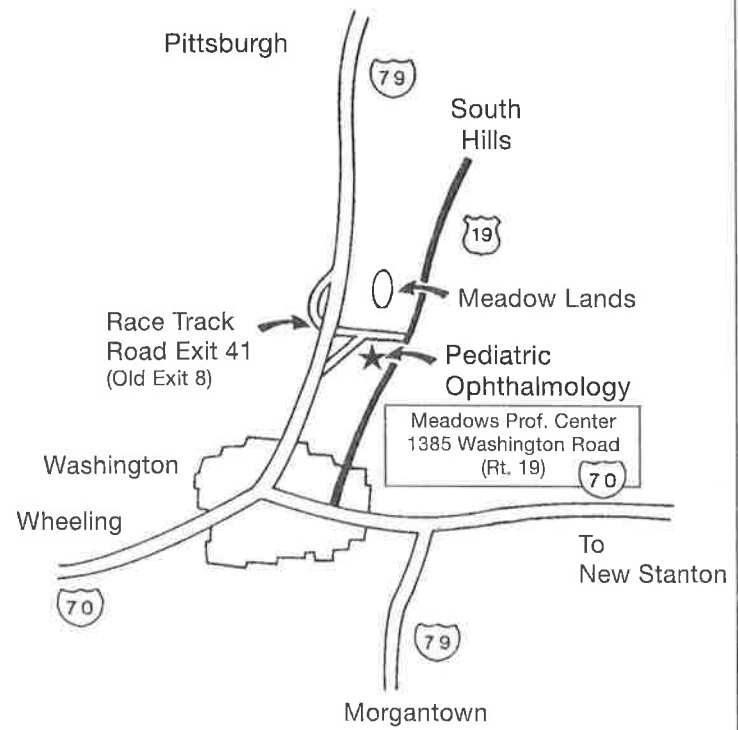
## North Office (Cranberry Township, PA)

### Pediatric Ophthalmology

124 Graham Park Dr.  
Suite 300  
Cranberry Twp., PA 16006



## South Office (Washington, PA)



## East Office (Murrysville, PA)

